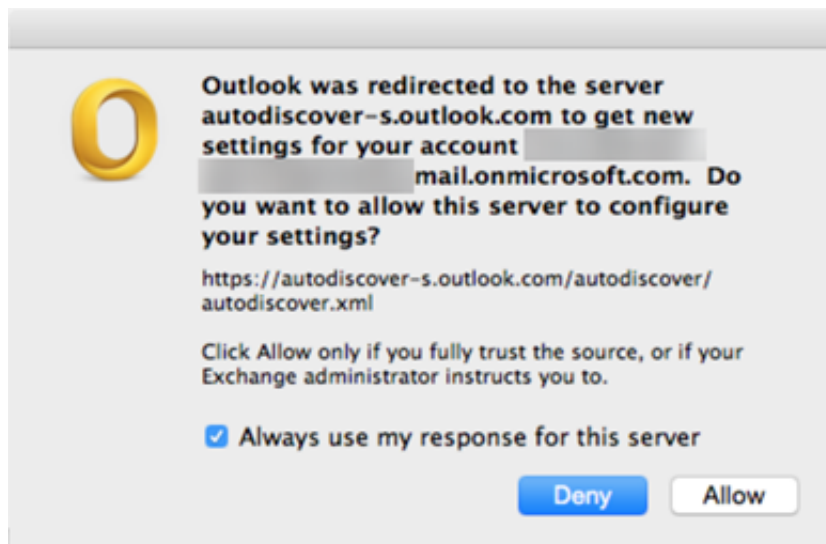




[Outlook For Mac 2016 Not Connecting To Exchange](#)



[Outlook For Mac 2016 Not Connecting To Exchange](#)



If you are upgrading from Outlook 2013 and your Exchange account wasn't moved to the new profile, you might be able to restore the old profile.. • Save and close • Double click to run and add it to Outlook 2016's Profiles.. I recently upgraded to Office 2016 from Office 2013 and the Exchange account wouldn't work.

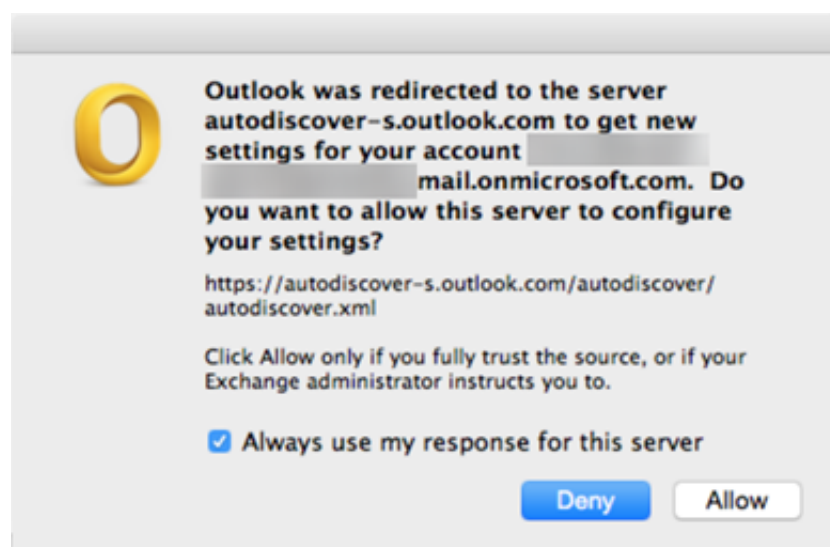
1. [outlook not connecting to exchange server](#)
2. [outlook not connecting to microsoft exchange](#)
3. [outlook 365 not connecting to exchange server](#)

To identify the root cause of these issues, the app runs checks such as: Checks licenses, Verify users' credentials and that Office 365 servers are reachable, Checks for updates to Outlook clients, Checks authentication, Network checks, Protocol checks The Priasoft AutoDiscover Testing Tool is a great free utility for testing and reviewing AutoDiscover for both Office 365 and Exchange On Premise.. If you are not able to connect Outlook 2016/2019 to Exchange using the Autodiscover feature refer to the Knowledge Base article on Why I Cannot Connect My Outlook 2016/2019 To Exchange; To set up Outlook 2016/2019: Navigate to Windows Control Panel > Mail > Show Profiles > Add.. • Browse to HKEY_CURRENT_USER SOFTWARE Microsoft Office 15 0 Outlook Profiles • Right click on your profile key and choose Export.. It is worth pointing out that while Outlook 2013/2016 on PC use MAPI/HTTP or RPC/HTTP to connect to Exchange 2013/2016 servers, both clients on Mac (Mac's own Mail client and Microsoft Outlook for Mac) uses Exchange Web Services (EWS).. • Right click on the Start button and choose Run • Type regedit in the Open field and click Ok.

outlook not connecting to exchange server

outlook not connecting to exchange server, outlook 2016 not connecting to exchange server, outlook not connecting to microsoft exchange, outlook 2016 for mac not connecting to exchange, outlook 365 not connecting to exchange server, outlook 2016 not connecting to exchange, outlook 2013 not connecting to exchange server, outlook 2010 not connecting to exchange server, outlook connecting to wrong exchange server, outlook 2019 not connecting to exchange, outlook exchange connecting, outlook not connecting exchange server, outlook connecting to exchange server slow, outlook connecting to exchangeguid, outlook not connecting exchange 2016, outlook connecting to old exchange server, connecting outlook to exchange online, outlook connecting to microsoft exchange, outlook anywhere not connecting exchange 2010 [Bunn Dual Tf Dbc User Manual](#)

If this is the only profile you have, open Outlook Otherwise, go to Control panel, find Mail and set Outlook to ask which profile or set this profile as the default. [Broadcom 5750 Ethernet Driver Xp](#)



[Nexus 2 Hollywood Expansion Torrent](#)

outlook not connecting to microsoft exchange

[Firmware For Samsung Galaxy S2 T989](#)

• Go to Edit, Replace or press Ctrl + H • Find 15 0 and replace with 16 0 Find and Replace the profile name if desired. [Gta V Mods Police](#)

outlook 365 not connecting to exchange server

[How To Crack Amazing Slow Downer For Mac free download](#)

Tools Microsoft Support and Recovery Assistant is a new tool that helps users troubleshoot and fix issues with various Office 365 apps and services.. There are only two options: 1) Outlook com or Exchange ActiveSync compatible service or 2) POP or IMAP.. I deleted it from my profile and went to add it back However, under 'Add Account' there is not an option to set up an Exchange account.. Why is it missing and how do I add my Exchange account to my profile? This is the new Outlook 2016 dialog for manually adding an account.. Q: Is this a trial key or will the key ever expire? Using our solution you have full control to test responses as different versions of Outlook, without Outlook required to be installed! Extremely helpful when you have a mix of Outlook clients you are supporting in your environment.. Specify your Profile Name and click OK. This method does not work 100% of the time, but it takes only minutes to try I recommend deleting any Outlook 2016 profiles of the same name or renaming the profile before adding this key to the Outlook 2016 profiles. 34bbb28f04 [Flashback Pro Crack](#)

34bbb28f04

[Heu kms activator](#)